

Ledge Light Health District – Weekly COVID-19 Report

All data in this report are preliminary and subject to change as additional information becomes available.

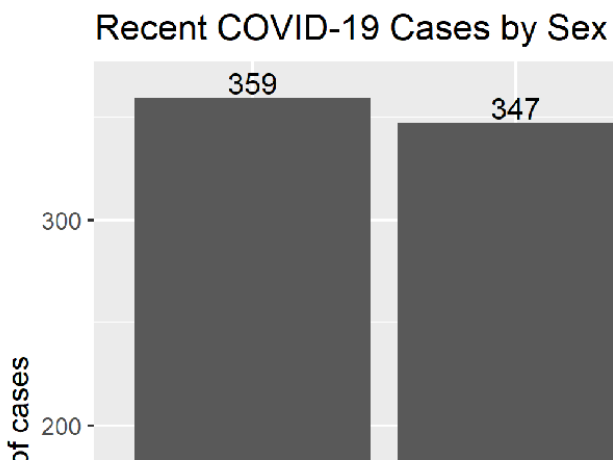
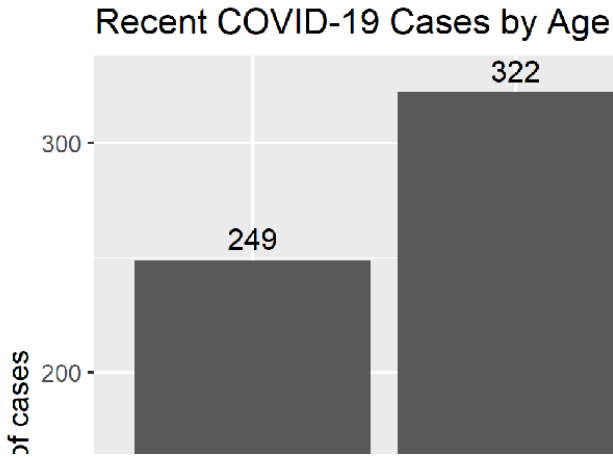
New COVID-19 cases in the previous two weeks by municipality (November 22, 2020–December 05, 2020)*

Municipality	New cases in the past 2 weeks	Average Daily Case Rate	Number of molecular tests and antigen tests in the past 2 weeks	Percentage of positive molecular tests and antigen tests in past 2 weeks
East Lyme	81	31.0	1659	5.4
Groton (town and city)	151	27.9	3378	5.2
Ledyard	65	31.5	1403	5.0
Lyme	<5	12.2	232	3.4
New London	200	53.0	4277	5.2
North Stonington	12	16.3	350	4.3
Old Lyme	19	18.4	779	3.1
Stonington	65	25.2	1626	4.7
Waterford	114	43.1	2118	6.2

*This table only includes cases and tests among persons residing in community settings; it does not include cases or tests among residents of nursing home, assisted living, or correctional facilities.

Distribution of Recent COVID-19 Cases by Age and Sex

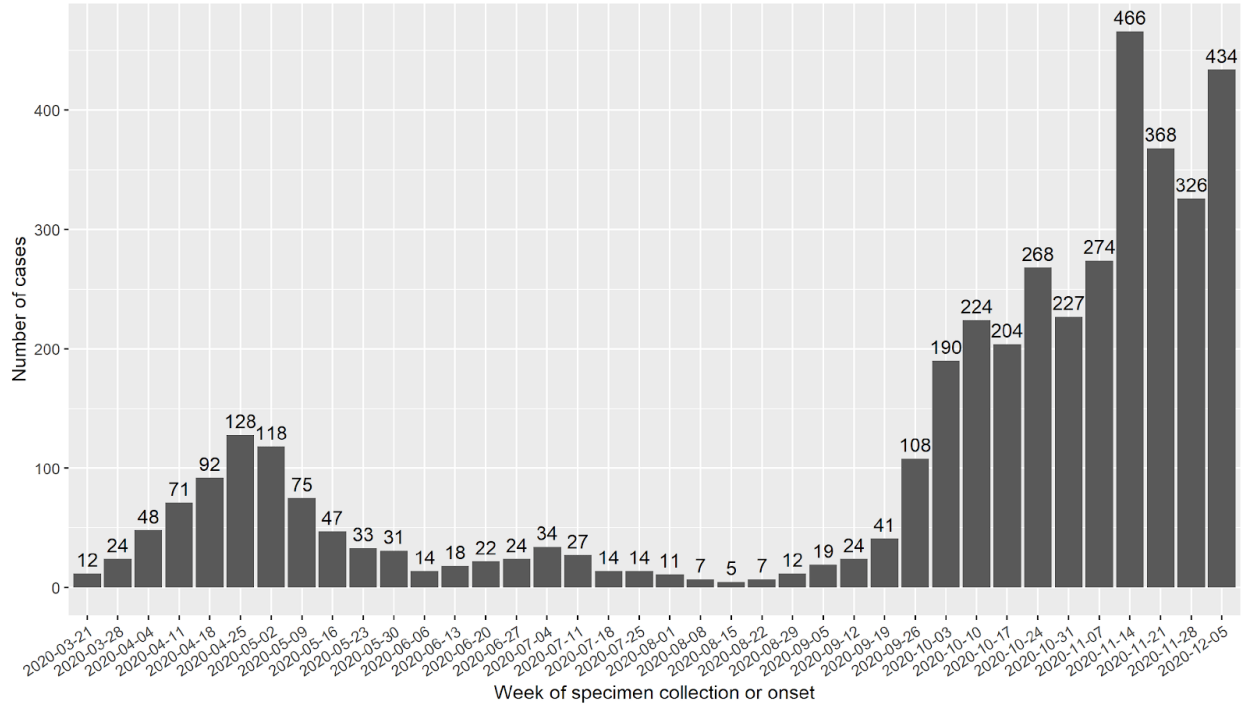
The following charts show the distribution of age and sex among people diagnosed with COVID-19 in the past two weeks in Ledge Light Health District. Only cases among persons who live in the community are included in the chart below. Cases among residents of nursing home, assisted living, or correctional facilities are excluded.



Ledge Light Health District COVID-19 Cases by Week of Specimen Collection or Onset

The graph below shows the number of COVID-19 cases among Ledge Light Health District residents since March 2020 by week. This chart includes cases among residents of congregate settings such as nursing homes and correctional facilities.

COVID-19 Cases among Ledge Light Health District by Week



Cumulative number of COVID-19 cases and deaths by town

The table below shows the total number of COVID-19 cases and associated deaths by municipality since the pandemic started in March 2020.

Municipality	Cumulative number of COVID-19 cases	Cumulative number of COVID-19-associated deaths
East Lyme	471	36
Groton (town and city)	911	47
Ledyard	314	6
Lyme	28	0
New London	1261	7
North Stonington	70	2
Old Lyme	102	2
Stonington	280	2
Waterford	638	40